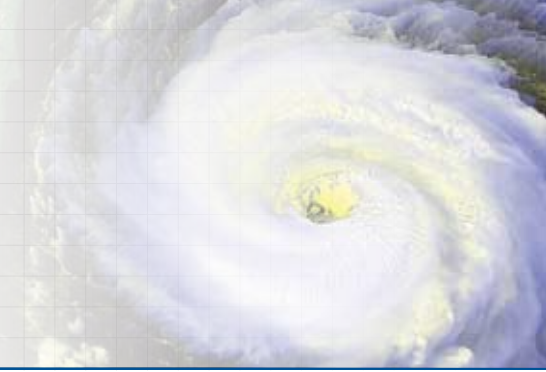


Earth Science Applications

Commercial Weather Applications



DIRECTMET®

For information about GST opportunities, please contact:
Global Science & Technology, Inc.
7855 Walker Drive, Suite 200
Greenbelt, MD 20770
301.474.9696
301.474.5970 fax
www.gst.com



DirectMet® GOES for Windows™

A Compact and Powerful Weather Workstation for Your Desktop

Image Processing, Display And Handling

LOOPING CONTROL

- ▶ Unlimited loop length
- ▶ Forward, reverse, stop, play, speed, and delay controls
- ▶ Resize and roam within image window while looping
- ▶ Change overlay colors and image enhancements while looping

IMAGE ENHANCEMENTS

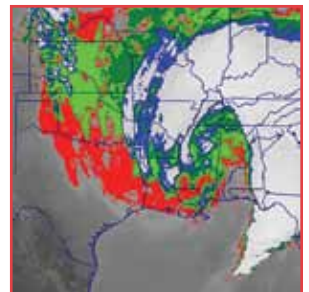
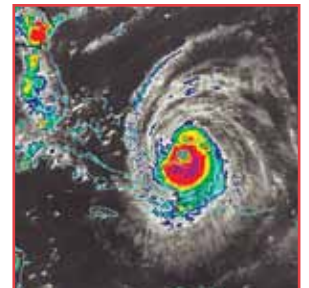
- ▶ Supports user-defined and standard image enhancement curves and color tables
- ▶ Save and recall custom enhancements / color Schemes
- ▶ Interactive histogram manipulation
- ▶ Translucent / semi-transparent overlay effects

VISUALIZATION

- ▶ Instant Geographic and political boundaries and latitude / longitude overlays
- ▶ Expandable and customizable cities / airports overlay database
- ▶ Native satellite view and five different map projections
- ▶ Unlimited zoom and roam within images
- ▶ High performance display

PRODUCT AND ANALYSIS

- ▶ DirectMet® provides both standard and unique analysis tools
- ▶ Displays IR brightness temperature, albedo and latitude / longitude position under cursor
- ▶ Optional "Typhoon Tools" for tropical storm position fixing and storm classification



Directmet® Software Optional Enhancements

- ▶ Typhoon Tools
- ▶ DirectMet® Archive
- ▶ Virtual Receiver
- ▶ DirectMet® Disseminator

▶ over

Earth Science Applications (continued)



DIRECTMET®

For information about GST opportunities, please contact:
Global Science & Technology, Inc.
7855 Walker Drive, Suite 200
Greenbelt, MD 20770
301.474.9696
301.474.5970 fax
www.gst.com



HARDWARE - DirectMet® is built with high-quality hardware components for reliability and durability.

SATELLITE RECEIVER AND ANTENNA SYSTEM

- ▶ 10 foot black powder coat mesh dish
- ▶ Integrated feed / downconverter
- ▶ GOES/GVAR receiver (bay mount with LED display)
- ▶ GOES/GVAR programmable frame synchronizer
- ▶ MTSAT HRIT receiver (external USB)
- ▶ 100 Feet RG-58 / U coaxial cable with connectors

GVAR PROCESSING SYSTEM

- ▶ 3.0 GHz Dual Processor (minimum)
- ▶ 1 GB RAM
- ▶ 80 GB hard drive
- ▶ Windows XP Professional
- ▶ NVIDIA graphics
- ▶ DVD burner
- ▶ 21" flat panel monitor

SOFTWARE - All ingest, data processing, and analysis is performed in a single XP and Vista workstation.

DIRECTMET® BASIC SOFTWARE (included)

- ▶ Ingest / product generation module
- ▶ Analysis module

Directmet® Is Network Ready!

Automate dissemination of publication-quality products with built-in DirectMet® Internet compatibility.

- ▶ Save products to local network drives and define custom products from networked computers with DirectMet® Virtual Receiver client sites
- ▶ Operate multiple analysis stations from a single (local) ingest workstation
- ▶ Define and automate the delivery of custom products from remote client sites
- ▶ Export to a Single File Name, facilitating image access and use via the web
- ▶ Export images to other file formats, including common broadcast formats
- ▶ Use any printer — virtually all printers are supported

Virtual Receiver Client

With the DirectMet® Virtual Receiver, one DirectMet® can serve many clients. Using the unique optional DirectMet® "Virtual Receiver" capability, any designated Internet- or LAN-based remote sites can feed transparently off the DirectMet® server to create their own locally customized products, scenes and scheduling.

For more information contact:
Paul Heppner: 240-542-1129
paul.heppner@gst.com

GST has installed more than 60 systems worldwide. A few of the locations include:

- South Korea • Philippines • Mongolia • Indonesia • Thailand • India • Australia
- Vanuatu • Papua New Guinea • Singapore • NOAA-NWS • All Central America • Chile
- Colombia • Ecuador • Peru • Cayman Islands • Curaçao • Bahamas • St. Martin
- Aruba • Grenada • Israel

Partnering for Success